



GOLF PROGRAM 2018/2019

3, 5 or 7 Nights



KEY SELLING POINTS — SALGADOS PALM VILLAGE

- Spacious and modern suites.
- Walking distance to the Salgados beach.
- Direct access to Salgados golf course and practising facilities.
- Free use of the practising putting greens in Salgados grounds.
- Free Golf at our 3 Golf Courses of 18 holes: Salgados, Morgado & Álamos.
- Free Golf Shuttle to Morgado & Álamos Golf Courses.
- Salgados Natural Reserve on site (excellent for bird watching).
- Gym and Spa available on site.

GOLF PROGRAM INCLUDES:

- 3 night's accommodation including 2 golf rounds per person.
- 5 night's accommodation including 3 golf rounds per person.
- 7 night's accommodation including 5 golf rounds per person.
- **Accommodation in Junior Suite / Suite T1 OR Suite T2 in All Inclusive basis.**
The maximum capacity mentioned for each typologies needs to be respected — Suite T2 maximum 4 Pax & Junior Suite/T1 maximum of 2 Pax.
- **Golf Rounds to be chosen from the 3 golf courses of 18 holes:** Salgados, Morgado & Álamos.
- **Free/Unlimited Golf at Salgados, Morgado & Álamos Golf Courses:** the extra rounds would only be free when played on the same day/course of the ones included/compulsory at the golf program, as second round of the day. It must be booked only after the consumption of the program rounds, at the reception, on the game date and subject to golf course availability – rentals & transfer are not included.
- **Free Transportation Hotel → Morgado & Álamos Golf Courses → Hotel are included according daily time schedule of groups transportation provided by the hotel upon the check-in. IT IS COMPULSORY TO BOOK IT IN ADVANCE,** together with the accommodation and the tee times. The client will receive the exact time of the transfer for each round, when they get the vouchers from our reception upon check-in.
- **Free Parking & Wi-Fi** at public areas and rooms.

| GOLF SEASON 2018/2019 <small>RATES PER PERSON, PER STAY / PROGRAM</small> | LOW SEASON March & April 2019 | | | HIGH SEASON 11 th September to 31 st October 2018 May, June & 16 th September to 31 st October 2019 | | |
|---|----------------------------------|----------|----------|---|----------|----------|
| | 3 Nights | 5 Nights | 7 Nights | 3 Nights | 5 Nights | 7 Nights |
| JUNIOR SUITE / SUITE T1 STANDARD Base 2 Guests All Inclusive basis | € 424 | € 705 | € 993 | € 455 | € 736 | € 1.024 |
| SUITE T2 STANDARD Base 4 Guests All Inclusive basis | € 353 | € 569 | € 818 | € 365 | € 581 | € 830 |

Closed from 1st November 2018 to 28th February 2019.
From 1st July to 15th September 2019: rates on request.

AVAILABLE SUPPLEMENTS & SPECIAL CONDITIONS:

- **Non Golfer Condition:** 10% discount on Golf Program price when sharing room (not cumulative with other discounts/promotions).
- **Single Supplement:** €55,00 per person, per night — only available for Junior Suite / Suite T1 Standard.
- **3 Pax Occupancy Supplement:** €40,00 per person, per night — only available for Suite T2 Standard.
- **Extra Night Supplement:** maximum 2 nights — available on request.
- **Different Room Typologies Supplement:** available on request.
- **Special Condition for the NAU guests on the our Golf Courses, ClubHouses and Pro Shops.**
- **Special Conditions for Golf Club Professionals** with groups of golf amateurs and for Golf Groups.
- **Golf Clinics** in Salgados & Morgado Golf Clubs — available on request.
- **Transfer from and to Faro Airport or Car Hire** is available on request at discounted prices.
- **Tea Times Bookings** to the remaining Algarve Golf Courses are available on request at discounted prices (to be booked at the hotel reception).

TERMS & CONDITIONS:

- Accommodation & starting times/transfers confirmation is subject to availability and booked at the same time, by the bookings department.
- Minimum stay 3 nights and the 3, 5 or 7 nights packages can be combined.
- In case the booking exceeds 20 rooms and a required rooming list/confirmation was not sent until 2 months in advance, the hotel reserves the right of reduce the number of rooms booked or eventually, cancel.
- This golf program is not cumulative with any other program, discount or offer.
- Prices with Service and VAT Included.
- Payment and cancellation/no-show policies will apply.
- Check-in time: after 4:00 p.m.
- Check-out time: until 11:00 a.m.
- Pets are not allowed.
- The above rates and conditions may change without prior notice.

CANCELLATION & NO-SHOWS POLICY:

Should the guest fail to arrive on the booked day or reduce his stay (early-departure), the Hotel reserves the right to charge the equivalent of the whole stay/program. Should the reservation be cancelled with less than 2 weeks before the arrival day, the Hotel reserves the right to charge the equivalent of the whole stay/program.

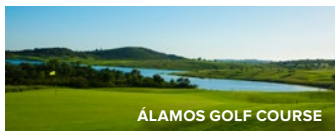
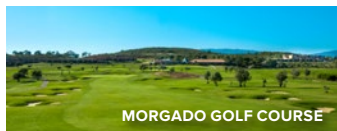
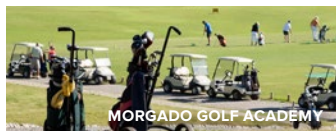
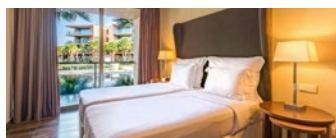
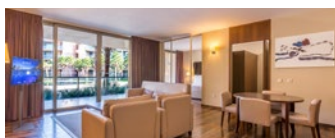
DRESS CODE & COURSE LOCAL RULES:

- The client must present himself at the golf reception with minimum of 30 minutes in advance and the handicap certificate must be presented at reception upon check-in.
- The player must be dressed appropriately and in accordance with the dress code of the golf course.
- Only 2 players and 2 sets of clubs are allowed per buggy. Non-golfing companions are only allowed to enter the golf course after authorization from management.
- The golf course management, in the exercise of its discretion, may decide to close it due to force majeure, natural disasters or any other emergency.
- The player also has to respect the rules of the venue/local rules and follow the instructions given by the starter and ranger. In the event of an infringement on any of the above conditions it may refused the access to the course and the value of the green fee will not be reimbursed.

HOTEL ADDRESS:

SALGADOS PALM VILLAGE SUITES
APARTMENTS & SUITES
Herdade dos Salgados, 8200-424 Guia, Albufeira | Algarve - Portugal
Tel.: (+351) 289 244 350 | Email: salgadospalmvillage@nauhotels.com

GPS: 37° 5' 42" N | 8° 19' 10" W





ALL INCLUSIVE BASIS

FROM APRIL TO OCTOBER 2019

During the stay, the guests will be identified by wearing an all-inclusive bracelet

INCLUDES:

- BUFFET BREAKFAST
- MORNING SNACK
- LUNCH
- AFTERNOON SNACK
- DINNER
- MIDNIGHT SNACK
- DRINKS (Premium Drinks Not Included)
- ENTERTAINMENT FOR CHILDREN AND ADULTS

FOOD & BEVERAGE SCHEDULE

All food service is to be carried inside the restaurants.

BREAKFAST: 7:30 am - 10:30 am

From 9:30 am, the flow of customers tends to be high, so it can generate queues. For your comfort, we recommend that you enjoy your meal off the busiest period.

MORNING SNACK: 10:30 am - 11:30 am

LUNCH: 12:30 pm - 3:30 pm

From 1:00 pm, the flow of customers intensifies and may cause queues. For your comfort, we recommend that you enjoy your meal off the busiest period.

AFTERNOON SNACK: 4:00 pm - 6:00 pm

DINNER: 7:00 pm - 10:00 pm

Booking required. We only accept reservations for the same day.

Dinner booking should be done every day of your stay:

- APRIL, MAY and OCTOBER:
During the breakfast period with the host service.
- From JUNE to SEPTEMBER:
From 9:00 to 11:00 am, in the *Tee Point*.
After this period you should book directly at the reception.
- In the case of not pre booking your dinner, we recommend that during the meal period, you should contact the service host. May implicate a waiting period depending on availability.

MIDNIGHT SNACK: 10:30 pm - 11:30 am

BEVERAGE

NON-ALCOHOLIC: 8:00 am - 12:00 am — Included

- Still and Sparkling Water
- Soft Drinks
- Coffee / Tea

ALCOHOLIC: 08:00 am - 12:00 am — Included

- Draft Beer
- House Wine (Red, White and Rosé)
- Red Wine Sangria
- Vodka, Rum, Gin, Whisky and National Liquors
- Selection of Cocktails (Mojito, Pina Colada, Caipirinha and Daiquiri)

PREMIUM BEVERAGES — subject to an Extra Cost

RESTAURANTS & BARS

SEASONAL OPENING: Opening may vary according to the season and volume of demand.

BIRDIE RESTAURANT

Buffet with traditional and international food options

BOGGEY RESTAURANT

Buffet with an influence of Italian foods and Show Cooking

DOUBLE BOGGEY RESTAURANT

Barbecue style Buffet

NO-SPIKES BAR

Bar next to the Reception with terrace
08:00 am - 1:00 am

DRIVING RANGE BAR

Bar with a variety of electronic games and terrace
04:30 am - 12:00 am

SWIMMING POOL SUPPORT BARS

Self Service Drinks
10:00 am - 6:00 pm

Additional notes:

It is not allowed to enter the bars and restaurants in bare-chested or room bathrobe.

MINI-BAR & ROOM SERVICE

MINI-BAR — Includes 1 still water per person/per day
ROOM SERVICE — Not Included / Not Available

FACILITIES

- 10 Outdoor Swimming Pools (4 for children)
- Volleyball Court - next to *Boggey Restaurant*
- Children Playground - next to *Double Boggey Restaurant*
- Outdoor Gym - next to *Double Boggey Restaurant*
- Mini Golf - next to *Double Boggey Restaurant*
- Convenience Store - next to the reception
- Nursing Office from July to September - next to the reception

GAMES ROOM (subject to an Extra Charge)

Located in the *Driving Range Bar* on the ground floor of Block 1.

AVAILABLE GAMES:

- Table football
- Pool
- Darts
- Air Hockey Machine
- Table Games

SHUTTLE TO THE BEACH

Free transportation (touristic train) to the Galé West Beach, available from JUNE to SEPTEMBER

MORNING SCHEDULE:

- First journey Hotel → Beach: 09:30 a.m.
- Last journey Beach → Hotel: 12:40 p.m.

AFTERNOON SCHEDULE:

- First journey Hotel → Beach: 02:00 p.m.
- Last journey Beach → Hotel: 06:10 p.m.

ENTERTAINMENT

Activities plan and schedules available at the hotel reception.

FROM APRIL TO OCTOBER:

- Kids Club
- Evening Entertainment

FROM JUNE TO SEPTEMBER:

- Entertainment for Children
- Entertainment for Adults
- Sports Entertainment

SWIMMING POOL TOWELS

01 TOWEL AVAILABLE PER PERSON / DAY

- During the check-in each guest will receive one towel card.
- During the check-out you should return the same amount of cards.
In case of failing to return the amount of cards given during the check-in, an additional cost of € 20.00 per card will be charged
- The change of towels will be made at the *No-Spikes Bar*, located next to the reception.
- Each guest is only allowed to use 1 towel per day.

POOL SUNBEDS

IT IS NOT ALLOWED TO RESERVE POOL SUNBEDS

Towels or personal items that are used for this purpose may be removed.

CLEANING SERVICE (Rooms/Suites)

DAILY: between 9:00 am and 5:00 pm

NEXT TO THE HOTEL (Extra Charge)

- **SPA SALGADOS PALACE**
 - Relaxation Heated Pool with whirlpool and chromotherapy
 - Jacuzzi
 - Sauna
 - Steam Bath
 - Contrast Shower
 - Treatment rooms for massages and wet and dry therapies
 - Gym
- **3 TENNIS COURTS (SYNTHETIC FIELD)** (within walking distance app. 100 meters)
 - Racquets and balls available for hire
- **1 FOOTBALL / MULTI-PURPOSE FIELD (SYNTHETIC)** (within walking distance app. 100 meters)
 - Footballs available for hire
- **SALGADOS GOLF COURSE (18 HOLES)** (within walking distance app. 200 meters)
 - Golf lessons
 - Golf Clubs and shoes for rental
 - Buggies and trolleys for rental
 - Practising facilities
 - Clubhouse with reception, restaurant, bar and shop
- **GALÉ-OESTE BEACH** (within walking distance app. 1,1 kilometers)
 - Beach sunbeds and sunshades available for hire
- **SALGADOS BEACH** (within walking distance app. 800 meters)
 - Beach sunbeds and sunshades available for hire
- **BEACH SPORTS AND ACTIVITIES** (provided by an independent beach concession — Not Included)
 - Pedal boats
 - Jet Ski, Kite Surf and Windsurf
 - Surf lessons and Stand up Paddle lessons
- **SALGADOS LAGOON (NATURE RESERVE)** (within walking distance app. 800 meters)
 - Birdwatching
 - Hiking
 - Jogging
- **RENTAL OF BICYCLES** (available next to the reception)
- **HORSEBACK RIDING ALONG THE COAST** (distance app. 2 kilometers - transport not included)
- **ALGARVE SHOPPING CENTRE (GUIA)** (distance app. 6 kilometers - transport not included)
- **ZOOMARINE** (distance app. 6 kilometers - transport not included)
- **ALBUFEIRA CITY CENTER** (distance app. 10 kilometers - transport not included)

OTHER INFORMATION

- Faro International Airport: 45 km
- Train station Albufeira (Ferreiras): 13 km
- Bus station: 600 mts
- Medical Centre / Hospital (Albufeira): 10 km
- Pharmacy (Guia): 6 km
- Police / Tourism Office / Nightlife (Albufeira): 10 km
- Casino (Vilamoura): 30 km
- Morgado & Álamos Golf Courses (Portimão): 22 km
- Football Stadium (Guia FC): 6 km

RECEPTION (available 24h)

CHECK-IN: from 4:00 pm
CHECK-OUT: until 11:00 am